

# 360 MEDICX EDUCATION DAY

Wed 24 June 2026, 6PM  
CEME Centre, East London



360  
Medicx  
Harley  
Street  
Clinic

**PARTNERSHIPS BROCHURE**

# Clinical Excellence Forum 2026

## Education Day for Primary Care and Specialist Collaboration

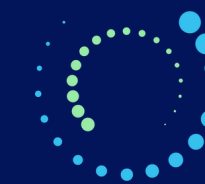
Contact the team today at [medicx@360medicx.co.uk](mailto:medicx@360medicx.co.uk)

# Where the clinicians shaping primary care come together.

Clinical Excellence Forum 2026 is a clinician-led education event designed to bring together leading consultants, GPs, healthcare professionals, and a select group of industry partners for a focused evening of education, discussion, and high-value networking.

Hosted by [360 Medicx Harley Street Clinic](#), the event is built around the theme *What Your Patients Need Next* and is designed to address the real-world complexity of modern patient care across respiratory medicine, cardiology, geriatrics, musculoskeletal health, neurodevelopment, gastroenterology, rehabilitation, and neurosurgery.





## **360 Medix Harley Street Clinic invites you to participate in the inaugural Clinical Excellence Forum**

*A curated clinical symposium bringing pharmaceutical and medtech partners together with London's leading prescribers – around the cases, conditions, and conversations that matter most in practice today.*

# Why partner with us

This brochure is designed for pharmaceutical, medtech, diagnostics, and digital health organisations seeking meaningful, compliant engagement with frontline clinicians in a high-quality educational environment.

The event has been structured to create practical commercial value for partners through a focused delegate audience, limited competition on-site, strong clinical credibility, and a format that supports genuine interaction rather than passive footfall.

*Compliant engagement with the clinicians who matter most to your therapeutic area.*



Inspiring. Inklus



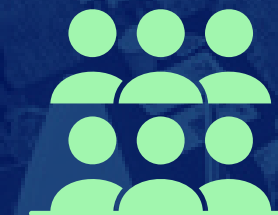
## Clinical Intelligence

**Gather qualitative insight directly from frontline prescribers on their challenges, patient priorities, and barriers to adopting new therapies.**



## Curated environment

**Attendance is by invitation and registration, creating a more intentional and professionally engaged audience.**



## Relevant audience

**Direct, compliant engagement with GPs, ACPs, and clinicians who prescribe, refer, and influence patient care daily.**



## ABPI alignment

**ABPI-aligned, with educational partner participation structured through compliant support models.**



## Venue and access

Taking place at the CEME Centre in East London, giving the event a professional, purpose-built setting that supports both educational delivery and exhibitor logistics.

The venue offers practical access advantages to support attendance and exhibitor participation:

- Complimentary on-site parking.
- Located on the A13 in East London.
- 15 minutes from Canary Wharf and London City Airport.
- 10 minutes from the M25 and District Line.
- 5 minutes from C2C train service.
- Bus 174 stops right outside the venue.



**FREE PARKING**  
for partners and  
delegates



**EASY TO REACH**  
transport options  
available

# Session topics



Sessions led by practising consultants and clinicians, each grounded in real-world primary care complexity.

01

## Managing Complex COPD and Asthma: Looking at the Overlap

**Dr Sundeep Kaul** · BSc MBCHB PHD FRCP FFICM AFRCs  
Consultant in General Internal Medicine, Respiratory Medicine & Intensive Care (Triple Accreditation), Head of Lung Division (Clinical Lead)

02

## Long-Term Oxygen Therapy: Criteria in Chronic Respiratory Disease

**Dr Kola Akinlabi** · BSc (Hons), MSc Respiratory Medicine (UCL), PG cert NMP, MPhil, PhD, MCSP.  
Clinical Lead, Respiratory COPD & Cardiopulmonary Rehabilitation, Post Covid & Oxygen Service

03

## New Updates in Heart Failure Medicines

**Dr Kaushik Guha** · MBBS, BSc (Hons), FRCP, MD  
Consultant Cardiologist & Heart Failure Lead

04

## Managing Multi-Morbidity

**Dr Olumide Adeotoye** · MB MMedSci FRCP  
Consultant Physician & Geriatrician

05

## Managing Hip and Knee Pain in the Elderly

**Dr Chichi Menakaya** · MBBS, MRCS (RCSEng), MSc  
Consultant Orthopaedic Surgeon

06

## Diagnosis and Management of ADHD and Autism in Primary Care

**Dr Adriana Coelho** · PhD (cand.), MSc, BSc  
Consultant Clinical & Educational Psychologist; Specialist in ADHD and Autism

07

## What is not IBS?

**Dr Akinfemi Akingboye** · MBBS, MD, FRCS (Gen Surg)  
Consultant Laparoscopic Colorectal & General Surgeon

08

## Neurosurgery: Brain Disorders

**Dr Andrew F. Alalade** · MBBS, MRCS, FRCS (Neurosurgery), FEBNS  
Consultant Neurosurgeon

09

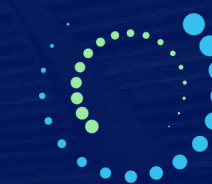
## Pulmonary Rehabilitation in Acute Exacerbation of COPD

**Binny Patel** · BSc (Hons) Physiotherapy  
Specialist Respiratory Physiotherapist

10

## Managing the Complex Patient in Primary Care

**Dr Sapna Kaul** · MBBS, MRCP  
General Practitioner



# Our renowned speakers

Bringing together a faculty of specialists from across 360 Medix and affiliated NHS and private institutions.



**Dr Sundeep Kaul**

Consultant in General Internal Medicine, Respiratory Medicine & Intensive Care (Triple Accreditation), The Royal Brompton & Harefield Hospitals (Guy's and St Thomas); Head of Lung Division (Clinical Lead); Senior Lecturer, Imperial College



**Dr Kola Akinlabi**

Clinical Lead, Respiratory COPD & Cardiopulmonary Rehabilitation, Post Covid & Oxygen Service, Barnet CLCH NHS Trust; Associate Lecturer London Metropolitan University



**Dr Kaushik Guha**

Consultant Cardiologist & Heart Failure Lead, Portsmouth University Hospitals NHS Trust



**Dr Olumide Adeotoye**

Consultant Physician & Geriatrician, Acute Trust, Northeast London



**Dr Chichi Menakaya**

Consultant Orthopaedic Surgeon; Founder & Clinical Lead, Annomo Health



**Dr Adriana Coelho**

Consultant Clinical & Educational Psychologist, Body and Mind Ltd; Specialist in ADHD and Autism



**Dr Akinfemi Akingboye**

Consultant Laparoscopic Colorectal & General Surgeon; Senior Clinical Lecturer, Aston Medical School, Birmingham



**Dr Andrew F. Alalade**

Consultant Neurosurgeon, Lancashire Teaching Hospitals NHS Foundation Trust



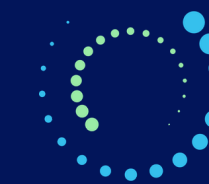
**Binny Patel**

Specialist Respiratory Physiotherapist



**Dr Sapna Kaul**

General Practitioner



## How to partner with us

The following pages outline the ways your organisation can participate in the Clinical Excellence Forum, from brand-only association through to full exhibition stand partnerships. Including:



### EDUCATION PARTNER

For organisations that wish to support independent clinical education without requiring a physical exhibition stand.



### EXHIBITION PARTNER

Higher tiers that unlock greater visibility, educational integration, and post-event reach.

# Partnership packages

Four ways to participate.



360  
Medicx  
Harley  
Street  
Clinic

Included	Educational Partner £1,500	Exhibition Partner STANDARD £2,000	Exhibition Partner PREMIUM £3,500	Exhibition Partner PLATINUM £5,000
Full networking access	✓	✓	✓	✓
Logo in delegate programme	✓	✓	✓	✓
Exhibition stand	—	✓	✓	✓
Full company profile in programme	—	—	✓	✓
Prime stand placement	—	—	—	✓
ABPI-compliant speaking slot	—	—	—	✓
Post-event feature	—	—	—	✓



INCLUDED IN ALL PACKAGES

## Full Networking Access

All partners have **dedicated access** to all networking periods throughout the evening – providing **direct, unhurried conversation** with GPs, consultants, and clinicians whose role includes evaluating, signposting, and where clinically appropriate, prescribing products and therapies to their patients



PLATINUM PARTNERS ONLY

## Post-Event Feature

Platinum partners receive continued visibility after the event through dedicated promotion across the following communication channels:

- 360 Medicx **website** spotlight
- Post-event delegate **email**
- 360 Medicx **social media** platforms

# Secure your place at the inaugural Clinical Excellence Forum

A clear, three-step path from initial interest to confirmed exhibitor briefing.

1. **Schedule** a brief discovery call to discuss your aims and objectives.
2. **Secure** your place at Clinical Excellence Forum 2026.
3. **Receive** your tailored partnership pack.

Places are allocated on a first-come basis. Early confirmation is strongly advised.

[Contact us](#)





## About 360 Medicx

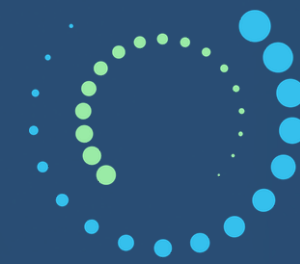
One clinic. Every specialist. No gaps in care.

From its base at 23 Harley Street, the clinic brings together over 14 specialist consultants – spanning respiratory medicine, cardiology, neurology, orthopaedics, oncology, psychiatry, and more – under one coordinated, patient-first model. Same-week appointments. Precise diagnostics. Care that does not end at discharge.

Led by CEO & MD, Dr Kola Akinlabi, and Chief Medical Officer, Dr Sundeep Kaul, clinicians who between them hold active positions across London's leading NHS trusts, 360 Medicx carries both Harley Street credibility and genuine frontline authority.

Home to the Akinlaborn Kaul Research Institute, the first UK clinical trials unit outside the NHS for chronic respiratory conditions, Long COVID, and post-ITU care, 360 Medicx is not just treating patients today. It is shaping how patients are treated tomorrow.

**360 MEDICX  
EDUCATION DAY**



360  
Medicx  
Harley  
Street  
Clinic

# **Clinical Excellence Forum 2026**

**Wednesday 24 June 2026, 6PM (BST)**

**CEME Campus, Marsh Wy, Rainham RM13 8EU**

**Contact us**

[360medicx.co.uk](https://360medicx.co.uk)