

360 MEDICX

HARLEY STREET CLINIC



360
Medicx
Harley
Street
Clinic

CONTENT

Foreword.....	02
Useful Information.....	03
About Us.....	04
Testimonial.....	05
Services.....	06
Testimonial.....	43
Consultant	44
How to Find Us.....	62
Notes.....	65

FOREWORD

I am delighted to welcome you to our world of innovative healthcare solutions. At 360 Medicx, we are committed to revolutionizing the landscape of healthcare through a fusion of cutting-edge technology, compassionate care, and a relentless pursuit of excellence.

In an era where the dynamics of healthcare are evolving at an unprecedented pace, it is crucial to have a partner that not only understands the intricacies of the field but also possesses the expertise to navigate its challenges. With a foundation built upon years of experience as a Respiratory Clinical Specialist Medicine and Consultant Physiotherapist, I am proud to lead a team that is dedicated to delivering exceptional healthcare services.

As you explore this brochure, you will discover the breadth and depth of our services, ranging from respiratory care to physiotherapy. We aim to be your trusted partner in your journey towards optimal health, offering tailored solutions that address your unique needs.

At 360 Medicx, we believe in the power of collaboration and continuous innovation. Our pursuit of excellence extends beyond our services and into the very fabric of our organisation. We are dedicated to staying at the forefront of medical advancements, ensuring that our patients benefit from the latest and most effective treatments available.

I invite you to embark on this journey with us. Together, let us shape the future of healthcare, where quality meets compassion, and innovation meets expertise. Thank you for considering 360 Medicx as your healthcare partner. Your well-being is at the heart of everything we do.



Dr. Kola Akinlabi

Chief Executive, 360
Medicx Respiratory
Clinical Specialist
Medicine Consultant
Physiotherapist

USEFUL INFORMATION

ADDRESS

23 Harley Street
London, W1G 9QN

TIMING

Monday to Friday 7am to 7pm
Saturday & Sunday 9am to 5.30pm*

PHONE

0208 0166042

EMAIL

medicx@360medicx.co.uk

*Other times by arrangement.

ABOUT US

Welcome to our premier medical specialist and rehabilitation hub, centrally situated in London's esteemed Harley Street, W1. Our facility proudly offers a wide range of medical, surgical, and physiotherapy services, ensuring unparalleled access to top UK Consultants.

Under the esteemed clinical governance of our Medical Director, Dr. Sundeep Kaul, our expertise covers respiratory medicine, cardiology, orthopaedics, neurology, psychiatry, and Intensive Care Medicine.

In our patient-centric approach, we provide physiotherapy outpatient clinics, home care services, and specialized rehabilitation for neurological, orthopaedic, and pulmonary conditions, all supervised by our Consultant Physiotherapist.

Noteworthy among our services are Musculoskeletal Physiotherapy and Sports Injuries, benefiting from the expertise of our advanced practitioners. Additionally, we offer psychological assessment and management for various conditions.

In partnership with J. Nissi Health Care and Medical Rehabilitation Ltd, we extend domiciliary personal home care services, ensuring comprehensive support.

Our commitment to holistic care and swift access to consultants within 24 hours underscores our dedication to setting new standards in healthcare. At Harley Street, we blend expertise, innovation, and a patient-first ethos to redefine medical excellence.





CLIENT TESTIMONIAL

360 Medicx provided exceptional care that exceeded my expectations. From the moment I arrived, I felt welcomed and valued. The team's professionalism and genuine concern for my well-being were evident throughout my treatment.

JOHN DOE



SERVICES





Medical Optimisation

360 Medicx Harley Street Clinic is your gateway to top UK Medical Consultants, ensuring prompt access to our outpatient clinics within 2-3 working days of your online or telephone inquiries. As pioneers in evidence-based medicine, we prioritize efficiency and excellence in patient care.

Our distinguished team of medical and surgical consultants covers a broad spectrum of specialties, offering expertise in respiratory medicine, cardiology, orthopaedics, neurology, psychiatry, general medicine, ENT, and colorectal surgery. This stellar group collaborates seamlessly with major London hospitals, ensuring access to advanced care and diagnostic services. At 360 Medicx, we are dedicated to delivering high-quality healthcare that is both accessible and grounded in the latest medical evidence.

Our Main Clinic sits on 23 Harley Street, the heart of globally famous hub for private healthcare and is home to specialist medical and rehabilitations consultants, offering a diverse range of medical specialties including our comprehensive medical optimisation service, respiratory medicine, cardiology, orthopaedic, Neurology, Psychiatry, Physiotherapy, Neuro/orthopaedic rehabilitation, pain and sport injuries.

The Main Clinic includes dedicated consultation rooms, a rehabilitation gym, and a unit for I-to-I diagnostic. We also have access to advanced diagnostic services on Harley Street for blood work, X-Ray, CT and MRI Scanners



Respiratory Medicine

360 Medix Harley Street Clinic prides itself on delivering an exceptional and cutting-edge respiratory medicine service, setting new standards in patient care and treatment innovation for people with Asthma, COPD, Interstitial Lung Disease and Motor Neurone Disease (MND). This esteemed clinic, located on the renowned Harley Street in London, has become synonymous with excellence in healthcare, particularly in the field of respiratory medicine.

One of the key pillars of the clinic's success is its commitment to staying at the forefront of medical advancements. Our respiratory medicine service employs state-of-the-art diagnostic tools and treatment modalities to ensure accurate and timely assessments. The clinic boasts a team of highly skilled and experienced respiratory specialists who are dedicated to providing personalized care tailored to each patient's unique needs.

Key features include:

1. Comprehensive Diagnostic Capabilities
2. Multidisciplinary Team Approach
3. Innovative Treatment Modalities
4. Patient-Centered Care
5. Telemedicine Services
6. Research and Clinical Trials

The respiratory medicine service sets a benchmark for excellence in healthcare. By combining advanced technology, a multidisciplinary approach, and a commitment to patient-centered care, the clinic continues to be a leader in providing effective and cutting-edge respiratory medicine services.





Cardiology Medicine

The cardiology service at 360 Medix Harley Street Clinic is a beacon of excellence in cardiovascular care, providing a comprehensive and advanced approach to the diagnosis and treatment of heart-related conditions. Situated on the prestigious Harley Street in London, the clinic has established itself as a leader in cardiology, offering a range of services that integrate cutting-edge technology, expert medical professionals, and a patient-centric philosophy.

Key features include:

1. State-of-the-Art Diagnostics
2. Highly Skilled Cardiologists
3. Comprehensive Risk Assessment
4. Interventional Cardiology
5. Holistic Approach to Heart Health
6. Electrophysiology Services
7. Research and Innovation
8. Patient Education and Support

Our cardiology service sets the standard for excellence in cardiovascular care. By combining advanced diagnostics, a team of skilled specialists, a holistic approach to heart health, and a commitment to ongoing research, the clinic continues to provide cutting-edge and patient-centered cardiology services.





Orthopaedic Surgeon's Outpatient Clinic

360 Medix Orthopaedic Surgeon's Outpatient Clinic offers a premier service dedicated to the assessment, diagnosis, and treatment of musculoskeletal conditions. This outpatient clinic is at the forefront of orthopedic care, providing patients with access to highly skilled orthopedic surgeons and state-of-the-art facilities.

Key features include:

1. Comprehensive Consultations
2. Advanced Imaging Services
3. Non-Surgical Treatment Options
4. Surgical Expertise
5. Specialized Orthopedic Subservices
6. Rehabilitation Services
7. Patient-Centered Approach
8. Collaboration with Multidisciplinary Teams
9. State-of-the-Art Facilities
10. Ongoing Research and Innovation

Our Orthopaedic Surgeon's Outpatient Clinic service provides a comprehensive and patient-focused approach to musculoskeletal health. With a blend of diagnostic precision, surgical expertise, rehabilitation services, and a commitment to ongoing research, the clinic stands as a leader in orthopedic care, offering a personalized and advanced solution to individuals seeking treatment for orthopedic conditions.



Colorectal Surgery Outpatient Clinic

360 Medicx Harley Street Clinic's Colorectal Surgery Outpatient Clinic is dedicated to providing specialized care for individuals with colorectal conditions. This outpatient clinic is committed to delivering comprehensive and patient-centered services, covering a wide spectrum of colorectal surgical needs.

Key features include:

1. Expert Colorectal Surgeons
2. Advanced Diagnostic Tools
3. Outpatient Consultations
4. Minimally Invasive Procedures
5. Comprehensive Treatment Options
6. Colon Cancer Screening
7. Continuity of Care
8. Patient Education and Support
9. Collaboration with Multidisciplinary Teams
10. Research and Innovation

The Colorectal Surgery Outpatient Clinic stands as a beacon of excellence in colorectal care. With a focus on expertise, advanced diagnostics, minimally invasive procedures, and ongoing patient support, the clinic offers a comprehensive solution for individuals seeking specialized care for colorectal conditions.





Neurology

Our Main Clinic offers a diverse range of medical specialties, including our comprehensive Neurology service.

Experience cutting-edge neurology care at 360 Medicx. Our dedicated team of specialists offers comprehensive evaluations and personalized treatment plans for a wide range of neurological conditions.

From diagnosis to rehabilitation, trust 360 Medicx to provide expert care tailored to your individual needs, ensuring your journey to optimal neurological health.





Ophthalmology

Discover unparalleled ophthalmology care at 360 Medicx.

Our expert team of ophthalmologists provides comprehensive eye examinations, advanced diagnostics, and personalized treatment plans for a variety of vision conditions.

From routine check-ups to complex surgeries, trust 360 Medicx to safeguard your eye health with precision and compassion.





Psychiatrist

At 360 Medicx Harley Street Clinic, we understand the profound impact that mental health has on overall well-being. Our Psychiatry Services are designed to provide comprehensive and compassionate care, tailored to meet the unique needs of each individual. With a team of experienced psychiatrists and mental health professionals, we are committed to supporting you on your journey to mental wellness.

Services We Offer:

- Individualized Treatment Plans
- Psychotherapy Excellence
- Medication Management

Our Commitment:

- Holistic Collaboration
- Telepsychiatry Services

Your mental health matters. Taking the first step towards mental wellness is a courageous decision and we are here to support you. Contact us today to schedule a consultation and embark on a journey to a healthier, and happier, life.





Diagnostic

We take pride in delivering a comprehensive suite of diagnostic services across a spectrum of medical domains. Our commitment to precision diagnostics is unwavering, and we employ cutting-edge technologies and methodologies to ensure an accurate assessment of respiratory, cardiological, gastrointestinal, psychiatric, and psychological conditions.

Pioneering Excellence in Multidisciplinary Diagnostic Services:

- Respiratory Diagnostic Services
- Cardiology Diagnostic Services
- Gastrointestinal Diagnostic Services
- Psychiatry and Psychology Diagnostic Services

Cutting-Edge Technology and Collaboration:

- CT Scans and Advanced Imaging
- Comprehensive Blood Tests
- Specialized Ambulatory Assessments

At 360 Medicx, our holistic approach to diagnostics is grounded in advanced technologies, a multidisciplinary team of specialists, and a commitment to delivering precise and personalized assessments across diverse medical domains. Your health journey is our priority, and we strive for excellence in every diagnostic service we provide.





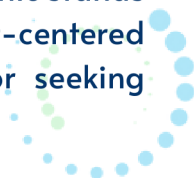
Physiotherapy And Sport Injuries Pain Clinic

360 Medix offers a dedicated Physiotherapy and Sports Injuries Pain Clinic, providing a specialized and comprehensive approach to the assessment, treatment, and rehabilitation of musculoskeletal and sports-related conditions. Situated in the heart of London's medical district, this clinic combines the expertise of skilled physiotherapists and sports medicine professionals with cutting-edge facilities to deliver a personalized and effective service.

Key features include:

1. Experienced Physiotherapists
2. Advanced Diagnostic Assessments
3. Individualized Treatment Plans
4. Sports Injuries Rehabilitation
5. Pain Management Strategies
6. Preventive Care
7. Sports Performance Enhancement
8. State-of-the-Art Facilities
9. Collaboration with Multidisciplinary Teams
10. Patient Education and Empowerment

The Clinic exemplifies a commitment to excellence in musculoskeletal and sports medicine. With experienced physiotherapists, advanced diagnostics, personalized treatment plans, and a focus on holistic care, the clinic stands as a leader in providing effective and patient-centered solutions for those dealing with pain, injuries, or seeking sports performance enhancement.





Pulmonary Rehabilitation

360 Medicx proudly offers an advanced and evidence-based individualized Pulmonary Rehabilitation Service, setting new standards in the comprehensive care and management of individuals with respiratory conditions. This specialized service is designed to enhance the quality of life for those living with chronic lung diseases such as chronic obstructive pulmonary disease (COPD), interstitial lung disease, and other respiratory disorders.

Key features include:

1. Multidisciplinary Team of Experts
2. Individualized Treatment Plans
3. Advanced Diagnostic Assessments
4. Exercise Training
5. Education and Self-Management
6. Behavioral and Psychological Support
7. Nutritional Counseling
8. Home Exercise Programs
9. Continuous Monitoring and Adjustments
10. Integration of Technology
11. Research and Evidence-Based Practices

The Pulmonary Rehabilitation Service exemplifies a commitment to excellence in respiratory care. Through advanced diagnostics, individualized treatment plans, education, and ongoing support, the clinic provides a comprehensive and evidence-based approach to enhance the lives of individuals with chronic respiratory conditions.



Orthopaedic Rehabilitation

360 Medicx Harley Street Clinic is proud to offer a specialized Orthopaedic Rehabilitation Service, dedicated to optimizing the recovery and function of individuals with musculoskeletal and orthopedic conditions. Our clinic, situated in the renowned Harley Street, stands as a beacon of excellence in providing comprehensive and personalized care.

Key features include:

1. Comprehensive Evaluation
2. Individualized Treatment Plans
3. State-of-the-Art Rehabilitation Equipment
4. Post-Surgical Rehabilitation
5. Specialized Therapeutic Interventions
6. Rehabilitation for Various Orthopedic Conditions
7. Collaboration with Orthopedic Surgeons
8. Home Exercise Programs
9. Pain Management Strategies
10. Patient Education

Our Orthopaedic Rehabilitation Service is designed to offer not just recovery but a path towards optimal musculoskeletal health. With a focus on individualized care, evidence-based practices, and collaboration with orthopedic experts, we are dedicated to guiding our patients through a comprehensive and successful rehabilitation journey.





Post ITU Rehabilitation

Pulmonary rehabilitation for chronic respiratory disease and post ITU care provides our state of the art care using the best available evidence to improve exercise tolerance, muscle strength and lung volume.

Our initial assessment covers, aerobic fitness test, assessing for VO2 Max, MHR/THR, 6MWT and assessing for diaphragm muscle strength using MIP/MEP and upper limb strength using IRM, IORM and Sit To Stand Test (STS) for lower limb strength.

Treatment involve, aerobic and endurance training targeting THR, also resistance exercise to improve upper limb, core stability, and lower limb muscle strength. Treatment is adapted to the individual and chronic respiratory condition and post ITU rehabilitation.





Neuro Rehabilitation

360 Medicx Harley Street Clinic is at the forefront of providing an effective and cutting-edge Neurorehabilitation Service, demonstrating a commitment to excellence in the field of neurological rehabilitation. This specialized service is designed to address the unique needs of individuals who have experienced neurological conditions or injuries, helping them achieve optimal recovery and improve their quality of life.

Key features include:

1. Multidisciplinary Approach
2. Advanced Assessment Techniques
3. Personalized Treatment Plans
4. Cutting-Edge Technologies
5. Neuroplasticity-focused Interventions
6. Comprehensive Rehabilitation Modalities
7. Continuous Monitoring and Adjustment
8. Patient-Centered Care

By offering an effective and cutting-edge Neurorehabilitation Service, 360 Medicx exemplifies a commitment to advancing neurological care and providing individuals with the best possible opportunities for recovery and improved neurological function.





Clinical Psychology Service

Welcome to the Psychology Service at 360 Medix, where we are committed to providing comprehensive and empathetic care for a range of psychological conditions. Our expert team specializes in the assessment and treatment of ADHD, Autism, Long COVID, and various other psychological conditions.

Why Choose 360 Medix Psychology Service:

- **Specialized Expertise:** Our psychologists have extensive experience in the assessment and treatment of ADHD, Autism, Long COVID, and diverse psychological conditions.
- **Holistic Approach:** We believe in addressing the physical, emotional, and social aspects of psychological well-being, ensuring comprehensive care.
- **Collaborative Care:** Our multidisciplinary team collaborates closely to provide well-rounded and coordinated care for each individual.
- **Patient-Centered Philosophy:** We prioritize open communication, involving patients in decision-making, and fostering a supportive environment throughout the assessment and treatment process.

360 Medix Psychology Service is dedicated to helping individuals and families navigate the complexities of psychological conditions, offering compassionate and effective care to support mental health and well-being.



Occupational Therapy

At 360 Medicx, our Specialist Occupational Therapist service is dedicated to optimizing the well-being and functionality of individuals through a comprehensive and individualized approach. Our occupational therapists are skilled professionals who collaborate with patients to overcome challenges and enhance their daily lives.

Key Focus Areas:

1. Functional Independence:
2. Rehabilitation
3. Chronic Condition Management
4. Pain Management
5. Mental Health Support

Services Offered:

1. Assessments
2. Customized Treatment Plans
3. Adaptive Equipment and Assistive Technology
4. Workplace Ergonomics
5. Functional Capacity Evaluations
6. Home Modifications

Our Specialist Occupational Therapist service is committed to empowering individuals to achieve optimal independence, function, and quality of life. Whether recovering from injury, managing chronic conditions, or seeking mental health support, our occupational therapists are dedicated to supporting individuals on their unique journeys toward enhanced well-being.

Regulated by



The domiciliary Homecare and personal care is regulated by CQC and provided by our parent company J.Nissi Health Care and Medical Rehabilitation Ltd



J. Nissi healthcare
medical rehabilitation Ltd

Homecare service is provided by J.Nissi Health care and Medical Rehabilitation Ltd

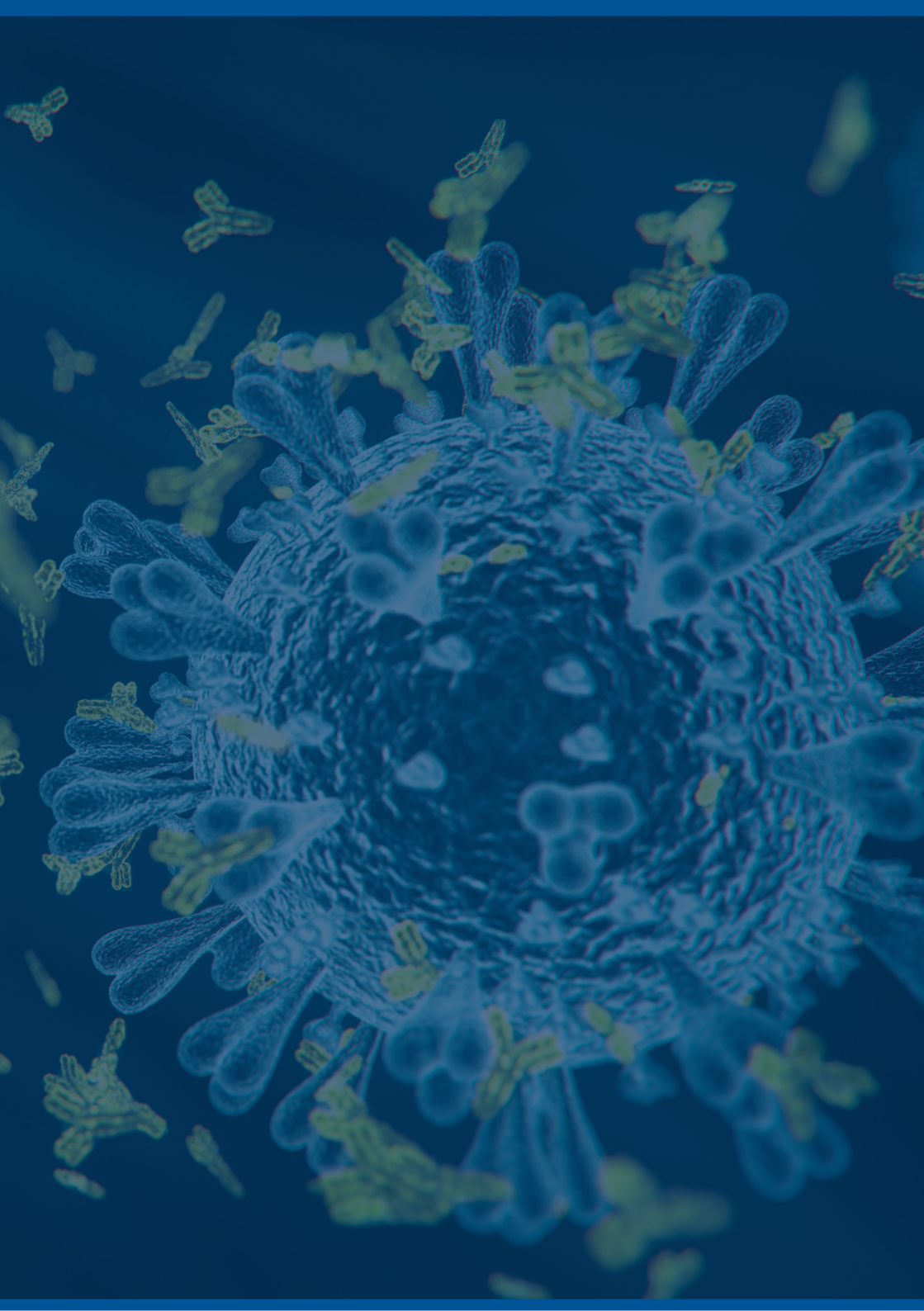
Domiciliary Homecare

J. Nissi Health Care and Medical Rehabilitation, in collaboration with 360 Medicx, offer personalised home care services focused on individuals' needs and preferences to enable them to stay in the comfort of their own home.

We hold important values of dignity, respect, privacy, care, empathy and compassion, placing our client at the centre of care.

Our service responds and adapts to the evolving needs of our service users and those of CQC.





Post COVID Service: Managing Long COVID

Post-COVID syndrome or “Long Covid” is defined as signs and symptoms that develop during or following an infection consistent with COVID-19 which continue for more than 12 weeks and are not explained by an alternative diagnosis.

360 Medicx Post COVID Service provides a comprehensive therapy and medical assessment following a self referral, or referral from your healthcare professional or GP, to support the physical, emotional, and psychosocial needs of those living with Long Covid. We provide our assessment in a face-to-face clinic. We also provide an online video link and telephone review for a small number of patients who are not able to make it to clinic.

We currently accept referrals for anyone with ongoing signs and symptoms from 4 weeks, following their initial suspected or confirmed COVID-19 infection. We provide post-COVID assessment and rehabilitation through a self-management approach for symptoms including breathlessness, fatigue, anxiety, depression, neuromuscular weakness, reduced exercise tolerance, and brain fog.



You will receive a holistic assessment for breathing pattern disorders, psychological impact, fatigue, basic autonomic response and exercise tolerance. This assessment is to understand the impact of long covid symptoms on your everyday functions and what support may be required, to facilitate a steady recovery.



CLIENT TESTIMONIAL

Choosing 360 Medicx for my healthcare needs was the best decision I've made.

Their comprehensive services, compassionate staff, and commitment to excellence have truly exceeded my expectations. I feel confident and cared for every step of the way.



JANE DOE



MEET OUR CONSULTANTS



CONSULTANT



Dr Sundeep Kaul

Consultant in General Internal, Respiratory,
Sleep & Intensive Care Medicine
Medical Director and Clinical Lead

Dr Sundeep Kaul studied at the University of Birmingham, graduating in 1995 and then went on to undertake postgraduate training in Oxford, Leicester and London. He studied for a PhD at King's College London, which focused on non-invasive ventilation and patient ventilation interactions.

After completing a Darzi Fellowship and gaining accreditation in general internal, respiratory and intensive care medicine, he was appointed as a consultant in intensive care and respiratory medicine at Harefield Hospital.

CONSULTANT



Dr Kola Akinlabi

CEO/Director of Clinical Services
Respiratory Clinical Specialist
Chronic respiratory medicine/ITU
Consultant Physiotherapist

Dr Kola Akinlabi (BSc (Hons), MSc, PhD, PGcert NMP, MSCP) is a Clinical Specialist in Respiratory medicine, ITU Rehabilitation and a Consultant Physiotherapist.

With extensive training from renowned institutions like UCL School of Medicine and Kings College Hospital, Dr. Akinlabi's expertise spans chronic respiratory conditions, post-intensive care rehabilitation, and pulmonary rehabilitation. He has led the establishment of several NHS services and presented groundbreaking research findings at prestigious conferences, notably revealing the impact of pulmonary rehabilitation on reversing frailty in COPD patients.

Dr. Akinlabi's contributions significantly advance respiratory care and improve healthcare outcomes.

CONSULTANT



Dr Adriana Coelho

Consultant Psychologist

Dr. Adriana Coelho is an esteemed Clinical and Educational psychologist renowned for her innovative approaches in inclusive education and empowering children with disorders and disabilities. Her expertise in Autism Spectrum Disorder and Neurodevelopmental disorders, coupled with her extensive skills in therapeutic modalities such as CBT, DBT, and mindfulness, positions her as a leading authority in the field.

Dr. Coelho's pioneering work includes using dance as a learning tool and developing effective interventions, like her EMDR protocol for long COVID patients, demonstrating tangible results and earning her recognition and awards.

CONSULTANT



Dr Sinmi Akerele

Consultant Psychiatrist

Dr Sinmisola Akerele MBBS , MRCPsych , PGCert(OU).

Consultant Psychiatrist with Dual Accreditation in General Psychiatry (sub-specialty in Liaison Psychiatry) and Older Adult Psychiatry.

Dr Sinmi is a Consultant Psychiatrist with over 19 years of Clinical experience working in the NHS In England and Northern Ireland.

She specialises in assessment and treatment of Psychosis, Mood Disorders (Depressive Disorder, Bipolar Disorder), Anxiety Disorders (Anxiety Disorder, Panic Disorders, PTSD, OCD and Phobias) and personality Disorders, but in adults and in older adults.

She specialises in the assessment and treatment of ADHD and also in assessment and diagnosis of Dementia in adults and older adults.

CONSULTANT



Dr Akinfemi Akingboye

Consultant Colorectal Surgeon

Mr Akinfemi Akingboye (MBBS, MD, FRCS (Gen Surg) is a consultant laparoscopic Colorectal and General surgeon. His areas of clinical interest are the surgical management of Inflammatory Bowel Disease (IBD), interventional endoscopy, advanced laparoscopic surgery, hereditary gastrointestinal cancer syndromes, colorectal cancer, benign and functional bowel disease, abdominal wall hernias, proctology, and emergency management of gastrointestinal diseases.

He completed his higher surgical training in General and Colorectal Surgery from Cambridge Deanery. He also undertook a subspecialist colorectal fellowship at St Mark's Hospital prior to taking up a consultant post. He is an academic surgeon with a Doctor of Medicine degree from Queen Mary University of London. He is also a senior clinical lecturer at Aston Medical School Birmingham and a fellow of the Royal College of Surgeon, England.

His research interest is in understanding the molecular biology involved in ethnic disparity in colorectal cancer in the young patient and the complexes in managing inflammatory bowel diseases. He has published in several scientific journals and functioned in the capacity of editorial board member.

CONSULTANT



Dr Kaushik Guha

Consultant Cardiologist

Dr Sundeep Kaul studied at the University of Birmingham, graduating in 1995 and then went on to undertake postgraduate training in Oxford, Leicester and London. He studied for a PhD at King's College London, which focused on non-invasive ventilation and patient ventilation interactions.

After completing a Darzi Fellowship and gaining accreditation in general internal, respiratory and intensive care medicine, he was appointed as a consultant in intensive care and respiratory medicine at Harefield Hospital.

CONSULTANT



Binny Patel

Specialist Physiotherapist

Binny Patel graduated with a BSc (Hons) Physiotherapy in 2002 from The School of Physiotherapy – Manchester University. Binny has had an extensive career so far including experience with cardio-pulmonary rehabilitation for chronic lung conditions particularly COPD. She has also served multiple hospitals including the renowned Royal Marsden for Oncology with specialist interest in rehabilitation post breast surgery and reconstruction. Rehabilitation of post-surgical patients on general wards as well as an extensive exposure to oncology surgeries including gynaecology, mens health , sarcoma as well as palliative care have been part of her career.

Binny has most recent experience with over 10 years practice in the community in cardio-pulmonary rehabilitation in patients with chronic respiratory conditions mainly COPD, Chronic Asthma, interstitial lung disease(ILD), long term oxygen therapy (LTOT) and ambulatory oxygen therapy assessment (AMBOT) and prescription. Her respiratory specialism also led her to assess and manage patients with long covid since the pandemic in 2020.

Involvement in research has always been a part of Binny's career with many of the studies published and presented in the British Thoracic Society conference, and The European Respiratory Society Conference.

OPERATIONS



Miss Dilani Thavarasa

Sport and Injuries Therapist
Director of Operations

As a Director of Operations in the specialist healthcare service, Miss Dilani Thavarasa excels in coordinating and managing departments, setting goals, and making sure they are achieved. With a proven track record of implementing operational strategies that drive patient satisfaction and safety, she thrives in optimising operational efficiency and ensuring that our patients receive the best possible care.

With experience in both outpatient and inpatient care, Dilani believes that each patient reaches their maximum level of mobility, allowing them to regain their independence and enhance their overall quality of life.

CONSULTANTS

Dr Robert Brown

Consultant Orthopaedic Surgeon

Dr Ga Dough

Consultant Ophthalmologist

Dr Silvia Ferries

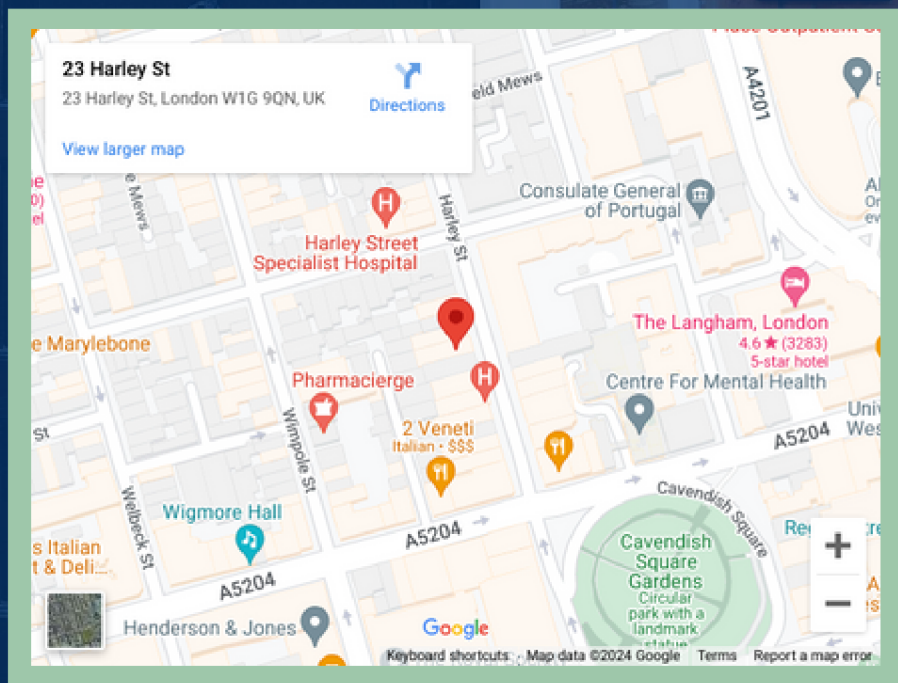
Consultant Neurologist



HOT TO FIND US



FIND US



360 Medicx

23 Harley Street, London, W1G 9QN

By Bus:

The following buses stop outside John Lewis, Oxford Street: 6, 8, 13, 15, 23, 73, 135, 137, 139 & 189

By Rail:

The nearest tube stations are Bond Street (Central and Jubilee Lines) and Oxford Circus (Victoria, Bakerloo and Central Lines). Both are only a short walk away.

By Car:

Short-term meter parking in surrounding streets and long-term car parking, at underground car parks in Cavendish Square and at the rear of Harley Street, is available.

Parking:

Local parking at Q-Park Oxford Street, in Cavendish Square, just a short distance from Harley Street .[Click here for more information.](#)



NOTES



Blank lined page for notes.



360
Medix
Harley
Street
Clinic

Blank lined page with horizontal dashed lines for writing.



360
Medix
Harley
Street
Clinic

Blank lined area for notes or text.



360
Medix
Harley
Street
Clinic

Blank lined area for notes or text.



360
Medix
Harley
Street
Clinic

HARLEY
STREET

HARLEY
STREET, W.



360
Medicx
Harley
Street
Clinic



360 Medicx
23 Harley Street
London
W1G 9QN



0208 0166042



<https://360medicx.co.uk/>



medicx@360medicx.co.uk

